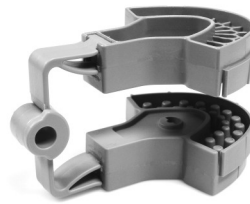


Anterior; The Monotrac V2 Anterior

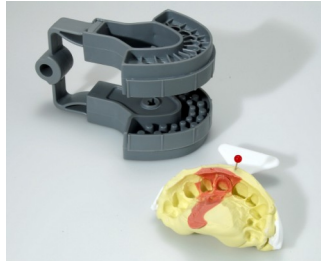
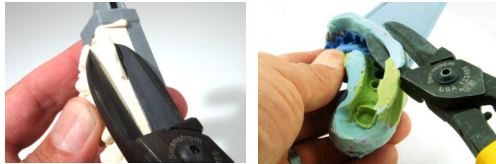
The Monotrac Anterior base tray is designed especially for the double bite anterior impression which captures the bicuspids and anterior teeth.



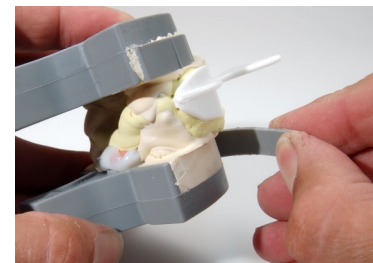
Monotrac
ARTICULATION
Model Performance

1. Trim the impression flat and parallel to the occlusal plane leaving room for the articulator to close to a parallel position.
2. Place a map pin at the midline of the impression to guide the center forward placement of the impression over the base (shown) or the base can be inverted over the impression. Pour the die side of the impression first (not the opposing) and the base with die stone and align, using the pin to center the tray with the impression. Let set.

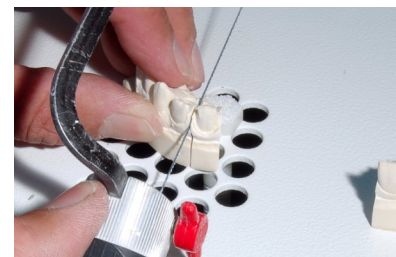
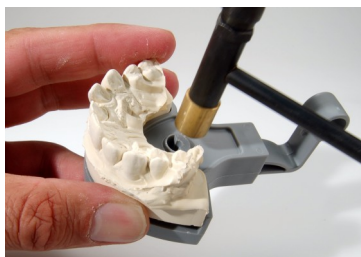
Tip; Monotrac Trimmers are a great tool for cutting impressions flat and square for a clean straight set up - They can also be used to remove stone flash.



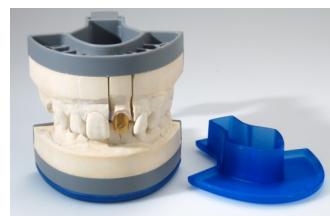
3. Pour the opposing side of the impression and opposing base. Engage the hinge and close over. let set. 4. Remove the impression and the Tear-Away wall formers. Scrape and smooth the junction line between the base and stone smooth with a lab knife. Remove stone flash. Smooth and remove any bulk with a lab bur (available from Monotrac, excellent quality and price).



5. The model is ejected from its base by tapping forward and back in a circular motion in the palatal area to achieve an EVEN LIFT OFF from the base. This will prevent chipping or cracking the model. Die section the model where needed. Tip; it is best to section out 2-3 teeth adjacent to the prep area to make it easier to remove the adjacent sections while working the model (sorry not shown here). Section with hand saw, hand piece disk, or the Monotrac Die Cutter Processing Station (shown) for faster straighter cuts. The top cut is made with a hand saw near the margin areas to meet the previous bottom cut. .



The finished case here is shown with optional cover caps for a nicer presentation. The restorations can be stored in the cap with a foam core for protection. Currently they come in blue, purple, grey, and turquoise. Call us if your lab would like custom colors or logos. Soon available.



Fast-Accurate-Simple